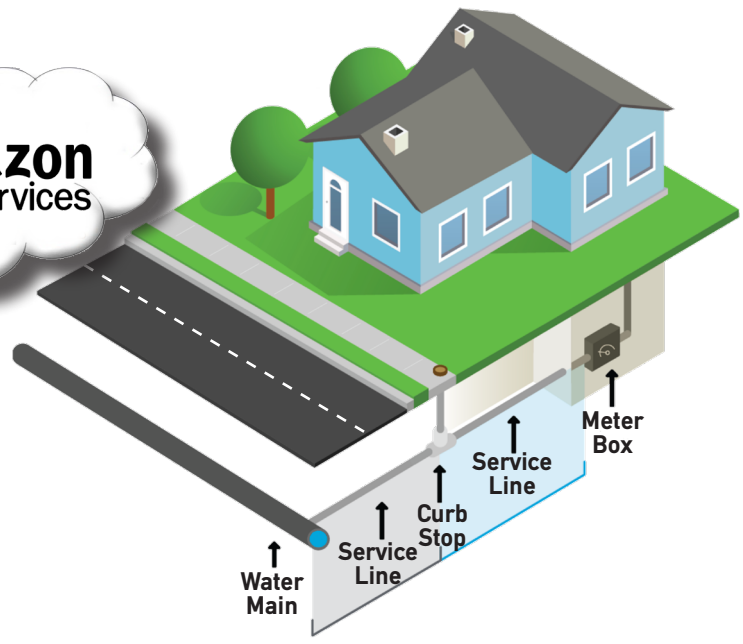
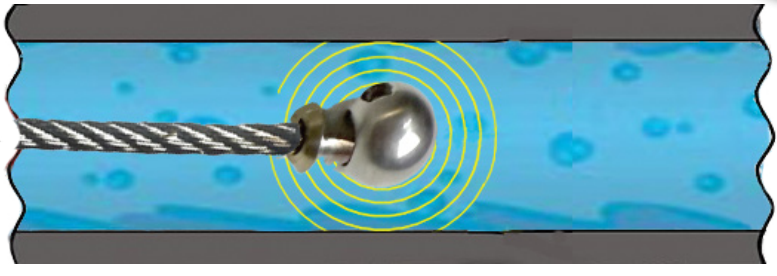




- **SWORDFISH** is the world's first hand-held buried lead pipe detection tool using an 18V battery with automatic system for cable feed in pipe diameters from ½ to 3 inches (12mm - 76mm).
- **SWORDFISH** is based on Electro Scan's patented machine-intelligent technology, developed in accordance with the American Water Works Association, Manual M77, Water Main Condition Assessment, to measure electric resistance using low-voltage conductivity to assess buried pipe materials.
- **SWORDFISH's** design enables users to grip the device with one hand and have the other hand free to guide the Electro Scan probe and cable in and out of the companion service line pipe insertion device.
- **SWORDFISH's** cable feed system maintains a selected feed speed with its rotating action allowing users to navigate multiple 90° pipe bends.
- **SWORDFISH's** fully enclosed drum eliminates free spinning parts, providing users with more protection to work in and around basement meters, bends and other obstructions.
- **SWORDFISH** readings are captured in real-time with data transmitted and processed in Electro Scan's Critical H<sub>2</sub>O cloud application, with results independently verified using a commercially available lead test kit for 100% verification of lead pipe.



The M18 FDCPF8 is a trademarked product of Milwaukee Electric Tool Corporation ("Milwaukee Tool") and integrated with Electro Scan Inc.'s patented technology to product SWORDFISH. Electro Scan Inc. is solely responsible for the integration, compatibility, workmanship, and warranty of SWORDFISH. Milwaukee Tool has no ownership interest or marketing rights to the SWORDFISH product or services.



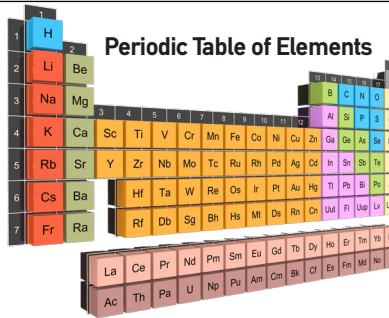
*SWORDFISH confirms lead pipes and galvanized pipes requiring replacement with an approved independent Lead Test Kit. Testing of probe is required after each survey.*



**LEAD**

### A Breakthrough in Buried Lead Pipe Detection

Electro Scan's SWORDFISH is a breakthrough in accurately & consistently locating buried lead pipes. Using its patented machine-intelligent low-voltage (i.e. non-acoustic, non-electro magnetic) technology, Electro Scan first discovered its ability to locate lead pipes when it was used to assess Asbestos Cement (AC) pipes; finding lead soldered joints used to seal pipe joints. Aided by the major difference in resistivity of pipe materials, Electro Scan developed SWORDFISH to enter pressurized pipes with 1/2-inch diameters with multiple 90° bends.



TECHNOLOGIES	Locate Buried Lead Pipes
Acoustic Monitors	<b>NO</b>
Fiber Optics	<b>NO</b>
Acoustic Sensors	<b>NO</b>
CCTV Inspection	<b>NO</b>

## EPA "Electrical Resistance Testing"

"There is essentially one technology that's currently is available to locate lead pipes. That's electrical resistance technology."

<p><b>HARDWARE INTEGRATION</b></p>  <p><b>CHARGER</b></p> <p><b>LITHIUM BATTERY</b></p>	<p><b>PROBES</b></p>  <p><b>Hook</b></p> <p><b>Ball</b></p>	<p><b>FIELD APP</b></p> 	<p><b>INSERTION TUBE</b> Chlorination Chamber, Plus Footage Encoder</p>  <p><b>RE-DIRECT TUBE</b> For Meter Fitting Navigation</p> 	<p><b>GROUNDING STAKE</b></p> 
<p><b>LEAD TEST SWABS</b></p>  <p><b>DENS LEA DENSIL LEAD TEST</b></p> <p>10 single use swabs for traceable lead detection on walls and pipes</p> <p>Made in U.S.A.</p>	<p><b>SUPPORT</b></p> 	<p><b>amazon web services</b></p> 	<p><b>CRITICAL H<sub>2</sub>O CLOUD REPORTING</b></p> 	

The M18 FDCPF8 is a trademarked product of Milwaukee Electric Tool Corporation ("Milwaukee Tool") and integrated with Electro Scan Inc.'s patented technology to product SWORDFISH. Electro Scan Inc. is solely responsible for the integration, compatibility, workmanship, and warranty of SWORDFISH. Milwaukee Tool has no ownership interest or marketing rights to the SWORDFISH product or services.